

NOTES: UNLESS OTHERWISE SPECIFIED

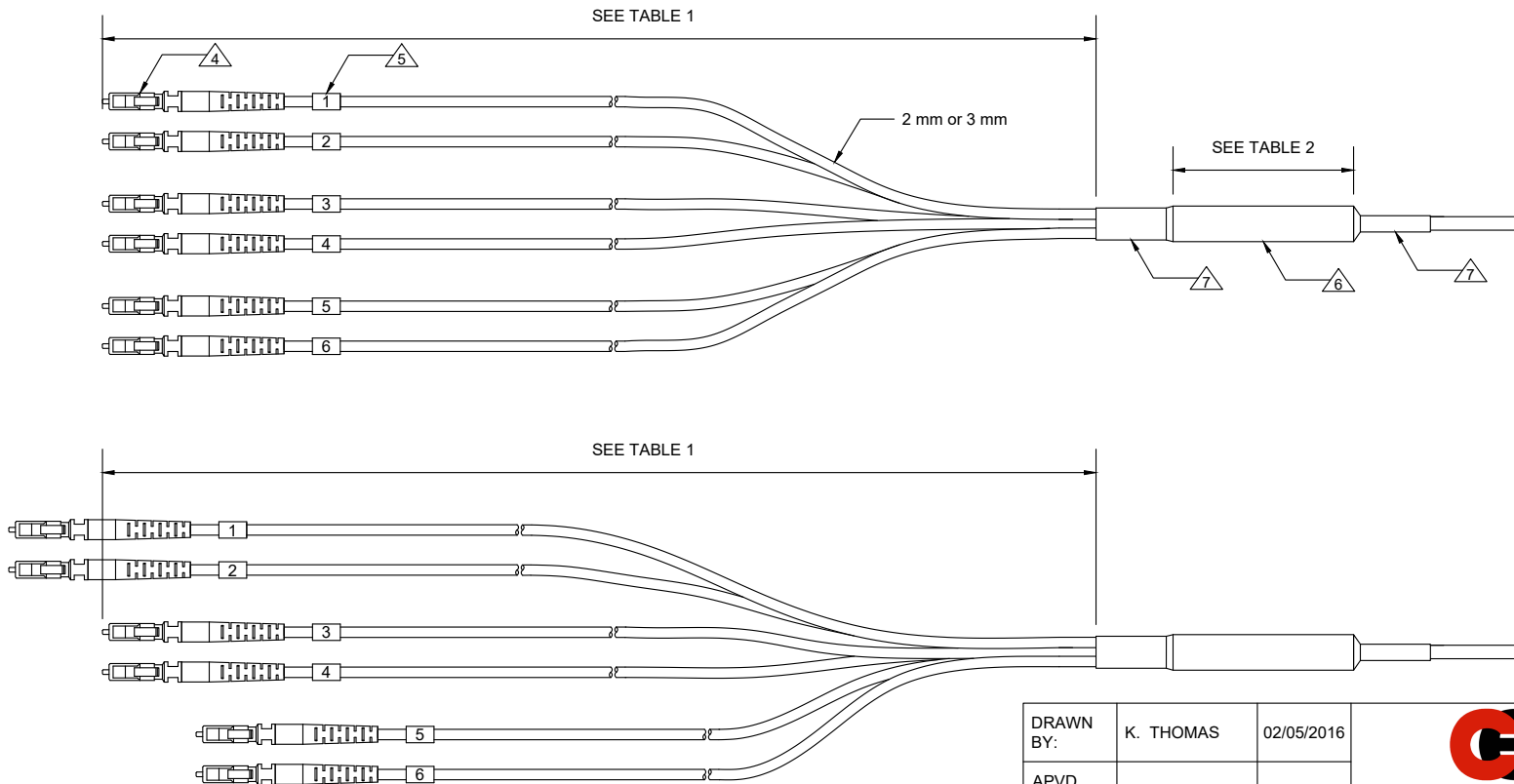
1. C-BREAK 2: SINGLE LEG BREAKOUT.
 - 1.1. ONE FIBER PER LEG.
 2. C ENTERPRISES ENGINEERING STANDARDS APPLY.
 3. WHEN PULLING EYE REQUESTED, CONNECTORS AND SUBUNITS WILL BE STAGGERED BY DEFAULT.
 - 3.1. CONNECTOR PAIRS STAGGERED BY 1 INCH INCREMENTS.
 - 3.2. PAIRS STAGGER ALTERNATE BY INCREASING AND DECREASING FROM DEFINED BREAKOUT LENGTH.
- 4 LC CONNECTOR SHOWN FOR REFERENCE ONLY.
 5 LABEL LEG NUMBER.
 6 C-BREAK. SEE TABLE 3 FOR OVERALL DIAMETER.
 7 HEAT SHRINK FOR STRAIN RELIEF.

REV	ECR	DESCRIPTION	BY	DATE	CHECKED
B	-	DRAWING FORMAT CHANGE & NOTES UPDATE. BLOCK UPDATE.	K.T.	05/09/2016	A.J.
B.1	-	STAGGERED END ADDED.	K.T.	06/21/2016	A.J.

TABLE 1 BREAKOUT LENGTH	
12 in	
18 in	
24 in [DEFAULT]	
36 in	
48 in	
1 M	
CUSTOM	

TABLE 2 C-BREAK LENGTH		
250 um COATED FIBERS		
LENGTH	FIBER COUNT	
1-1/2 in	2-4	
2 in	6-12	
3 in	16-36	
4 in	48+	
900 um TIGHT-BUFFERED FIBERS		
1-1/2 in	2	
2 in	4-12	
3 in	16-18	
4 in	20+	

TABLE 3 C-BREAK OVERALL DIAMETER				
FIBERS	900 um	2 mm	3 mm	
2-8	DIMENSIONED BEST FIT			
12	3/8 in	5/8 in	3/4 in	
16	5/8 in	3/4 in	3/4 in	
24	5/8 in	7/8 in	1-1/8 in	
36	7/8 in	1-1/8 in	1-3/8 in	
48	7/8 in	1-3/8 in	1-3/8 in	
72	7/8 in	1-3/8 in	1-3/8 in	
96	1-1/8 in	TBD	TBD	
144	1-1/8 in	TBD	TBD	



WITH STAGGERED CONNECTORS

DRAWN BY:	K. THOMAS	02/05/2016
APVD BY:	A. JENSEN	06/21/2016



C ENTERPRISES
 2445 CADES WAY
 VISTA CA 92081
 760-599-5111

DIMENSIONS: METRIC [IMPERIAL]		TITLE: C-BREAK-BK2	
PROPRIETARY AND CONFIDENTIAL	SIZE A	DWG. NO. C-BREAK-BK2	REV B.1
THIS DOCUMENT CONTAINS PROPRIETARY INFORMATION OF C ENTERPRISES. NOT TO BE USED, COPIED, OR DISCLOSED WITHOUT WRITTEN PERMISSION. ALL RIGHTS RESERVED.			SCALE: NOT TO SCALE
			SHEET 1 OF 1